



GPS Conection

Now that APIC is installed, you need to configure the GPS communication settings



If you are using a Bluetooth GPS with APIC, you will need to “**pair**” the GPS with your computer first.



**For a USB GPS, simply plug
the GPS receiver into your
computer.**

Find

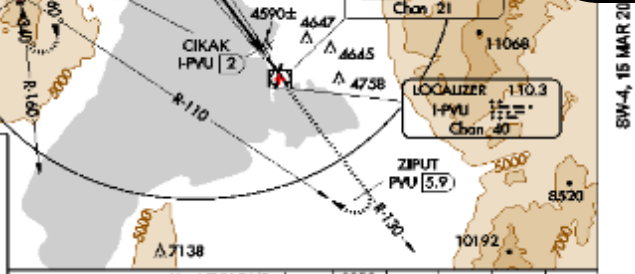
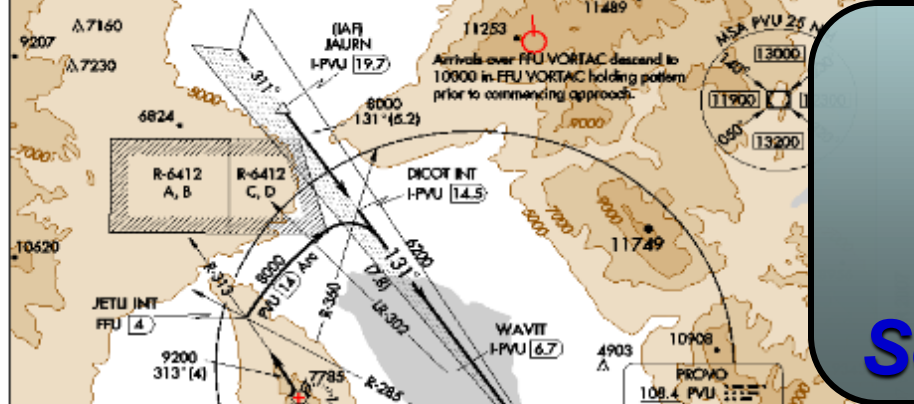
PROVO, UTAH AL-683 (FAA)

LOC/DME I PVU 110.3 Chan 40	APP CRS 131°	Rwy Idg 8590 TDZE 4497 Apt Elev 4497
-----------------------------------	-----------------	---

ILS or LOC/DME RWY 13
PROVO MUNI (PVT)

Clcirng not authorized east of Rwy 18 and 31. MISSED APPROACH: Climb to 9000 via heading 131° to intercept PVU VOR/DME R-130 to ZIPUT/5.9 DME. Then dimbing right turn via FFU VORTAC R-110 to FFU VORTAC and hold.

ATIS 135.175	SALT LAKE CITY APP CON 124.3 322.3	PROVO TOWER * 125.3 (CTAF) 0	GND CON 119.4	UNICOM 122.8
-----------------	---------------------------------------	---------------------------------	------------------	-----------------



CATEGORY	A	B	C	D
S-ILS 13	4697-3	200 (200-4)		
S-LOC 13	4820-1	323 (400-1)		
CIRCLING	4900-1 403 (500-1)	4960-1 463 (500-1)	4960-1½ 463 (500-1½)	5060-2 563 (600-2)

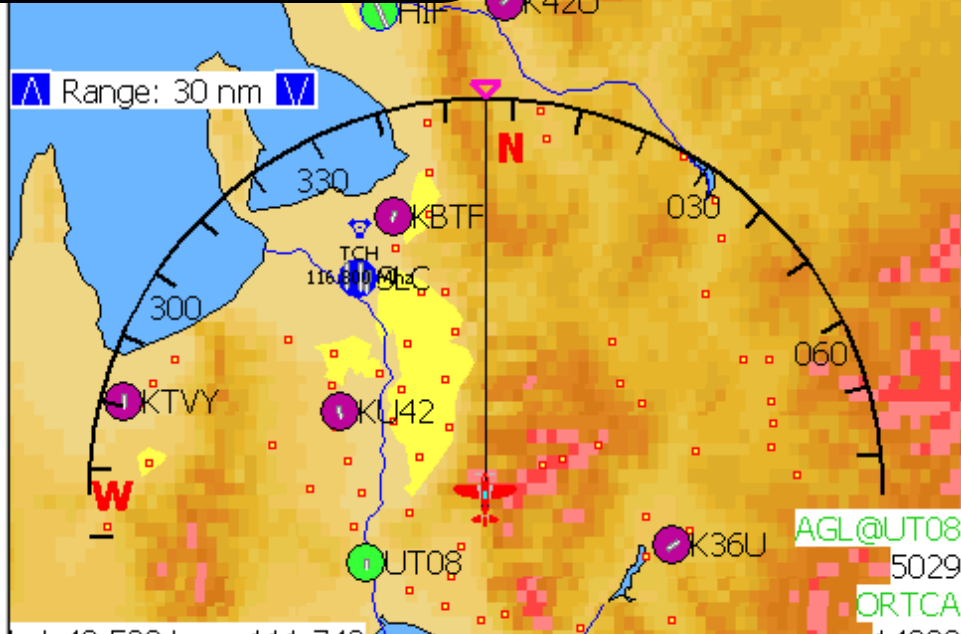
PROVO, UTAH Orig-A 06271

40°13'N-111°43'W

ILS or LOC/DME RWY 13



On APIC's main page open the **Settings** menu



SW-4, 15 MAR 2007 to 12 APR 2007

SW-4, 15 MAR 2007

Settings



Aviation
Data

Geographical
Data

Custom
Data

Weather

Bugs
Units

Font
Size

Speeds

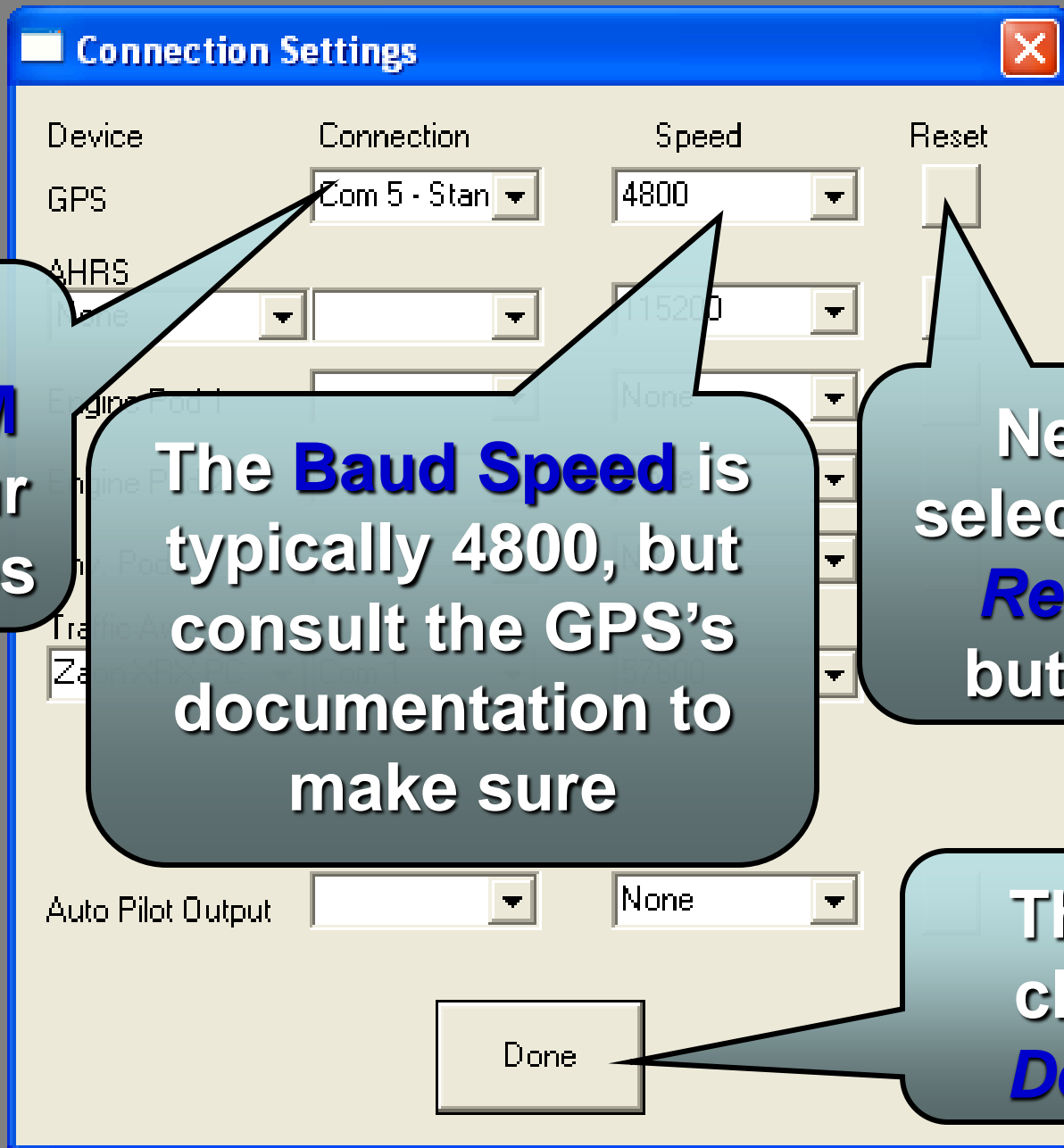
Aircraft
Params

Limits

Connections

Done

Open the
Connections
menu

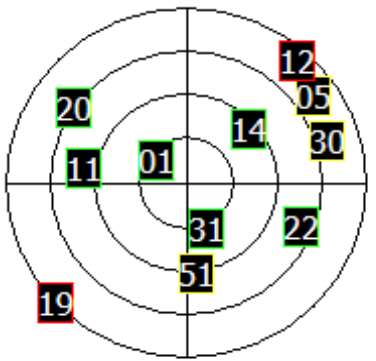


Select the **COM Port** your GPS uses

The **Baud Speed** is typically 4800, but consult the GPS's documentation to make sure

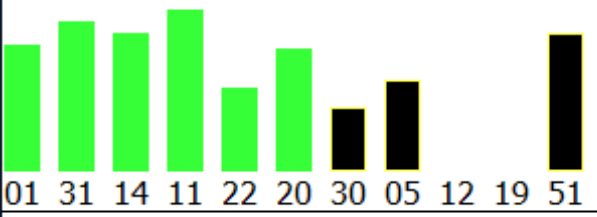
Next select the **Reset** button

Then click **Done**



Date: 11 Jun 2007
 UTC: 19:10:26
 Heading: 157
 Speed: 0.3 kts
 Alt: 4850 ft
 Status: 3D
 HDOP: 1.6
 VDOP: 1.6
 Lat: N 40.3190 Lon: W 1

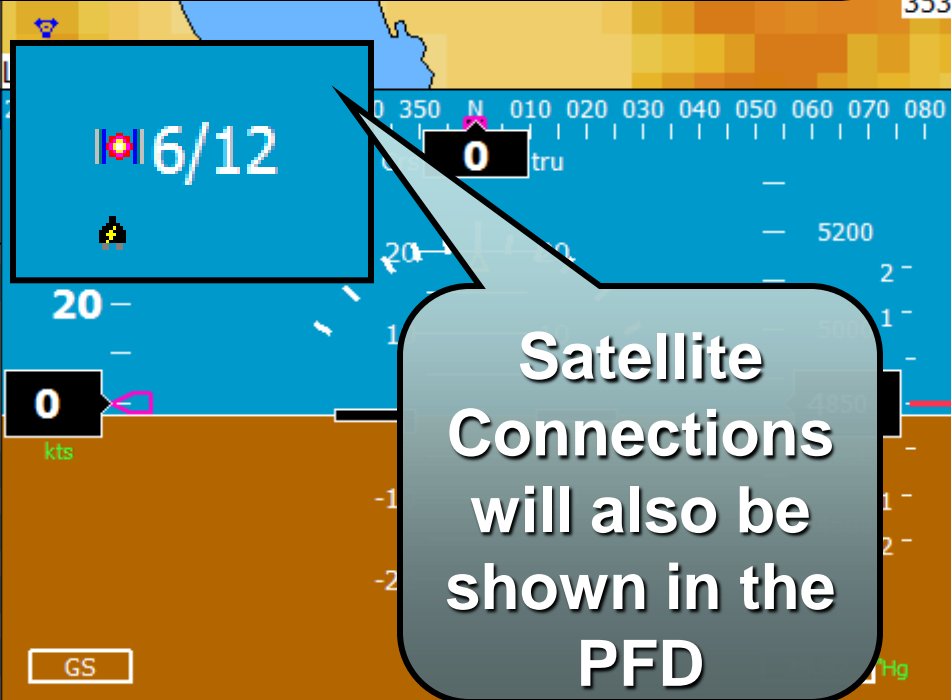
\$GPRMC,191026.000,A,4019.1381,N,11142.3263,W



Nearest Airport

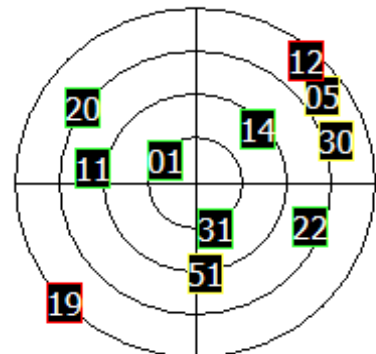
Note: Be patient! It can sometimes take up to 5 minutes to make connections with GPS satellites

The Satellite Information Screen will also contain satellite connections status and real-time GPS information



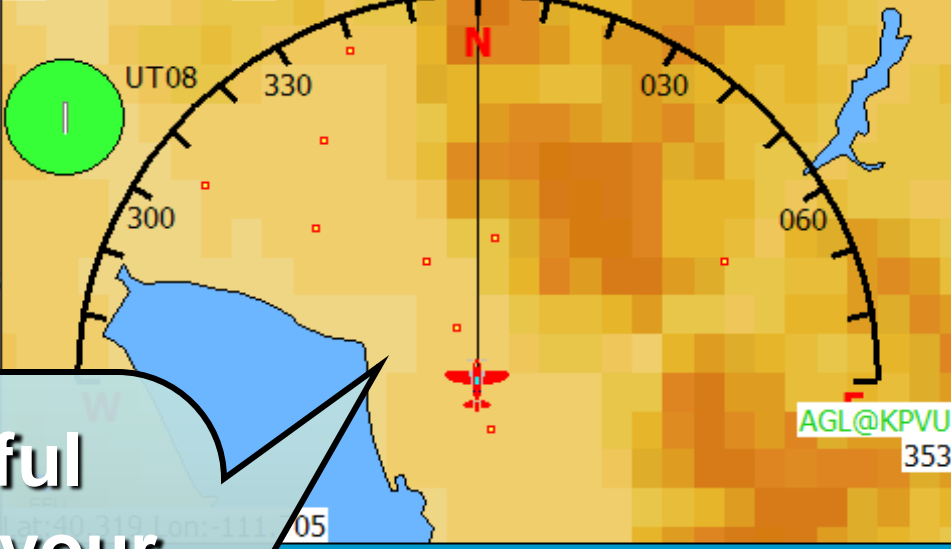
Satellite Connections will also be shown in the PFD

- View-1
- Checklist
- Flt Plan
- Direct-To
- Find Arpt
- Settings
- UsrWpts
- Pan
- About
- Exit
- Sim



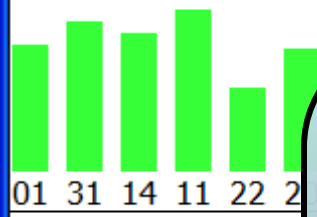
Date: 11 Jun 2007
 UTC: 19:10:26
 Heading: 157
 Speed: 0.3 kts
 Alt: 4850 ft
 Status: 3D
 HDOP: 1.6
 VDOP: 1.6
 Lat: N 40.3190 Lon: W 111.7054

Auto: 10 nm



AGL@KPVU 353

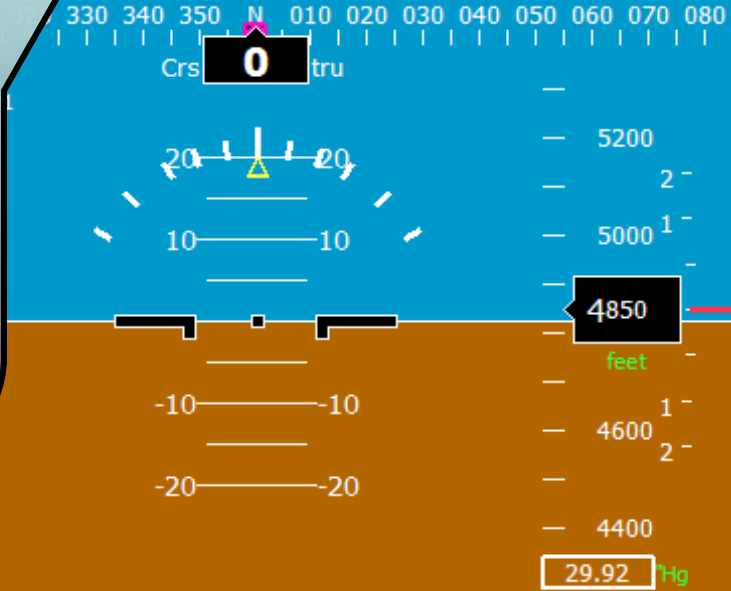
Upon successful connection with your GPS, your current location will be projected on the moving map



Ne

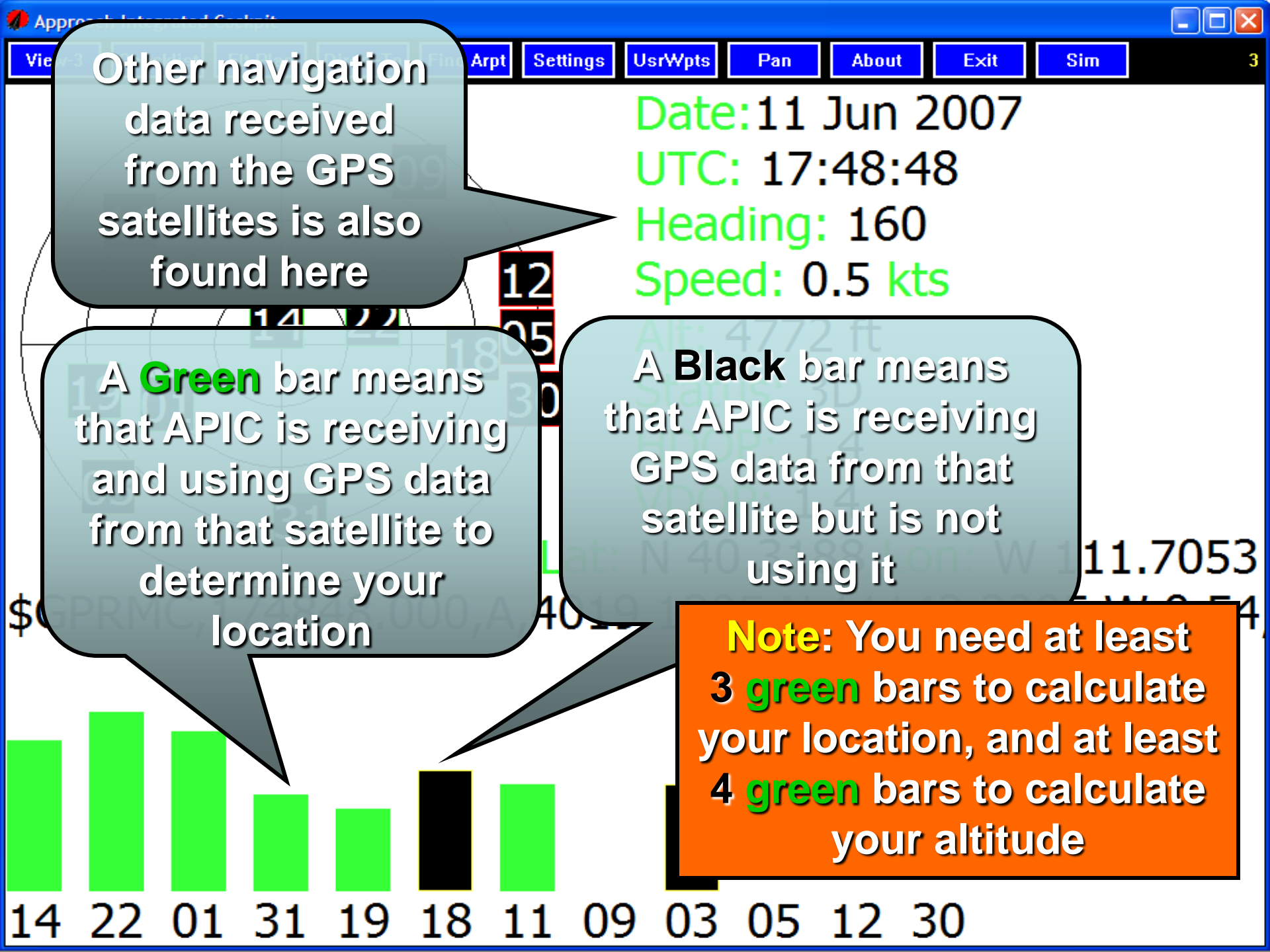
ARPT

KPVU			
KU77			
UT08			
K36U			
KU42			
SLC	30.8	336	124.750M
KTVY	34.3	301	119.725M



GS

29.92 Hg





For any other questions regarding APIC see

www.approach-systems.com

or contact Approach at

support@approach-systems.com