

# Installation Instructions for WxWorx Satellite Radio

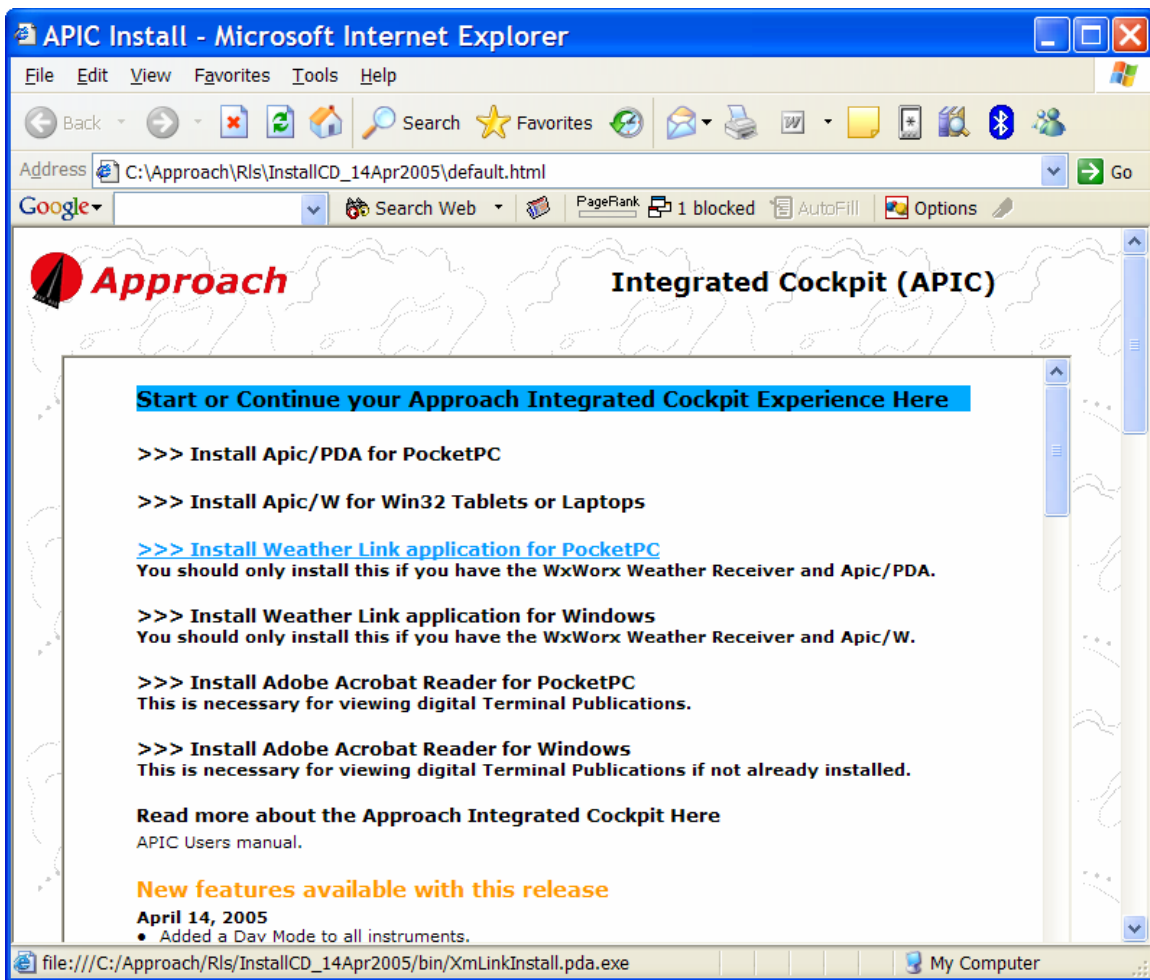
## Windows Mobile Devices

Approach Systems  
April 26, 2005

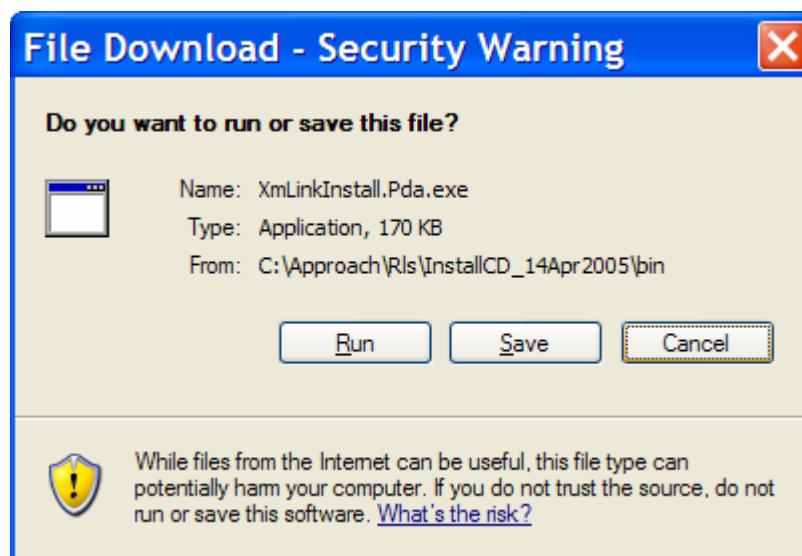
The steps for Installing the WxWorx Satellite Radio are:

- [Install the Weather Link application](#)
- [Connect the WxWorx Satellite Radio hardware](#)
- [Pair the WxWorx Satellite Radio with your PDA \(Bluetooth only\)](#)
- [Set the WxWorx Satellite Radio COM port](#)
- [Activate your XM subscription](#)

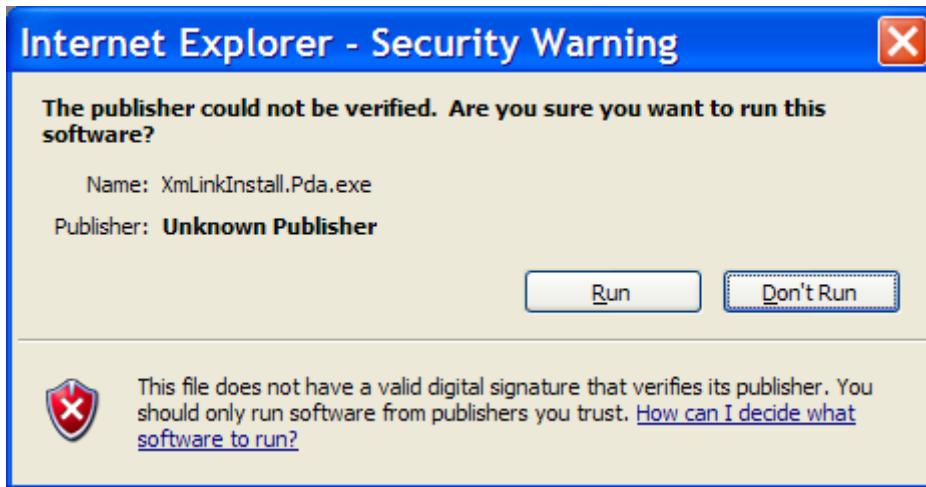
- 1) **Install Weather Link application (XmLinkInstall.Pda.exe)**
  - a. Insert your Approach Integrated Cockpit Install CD and click on the hyperlink “Install Weather Link application for PockePC”.



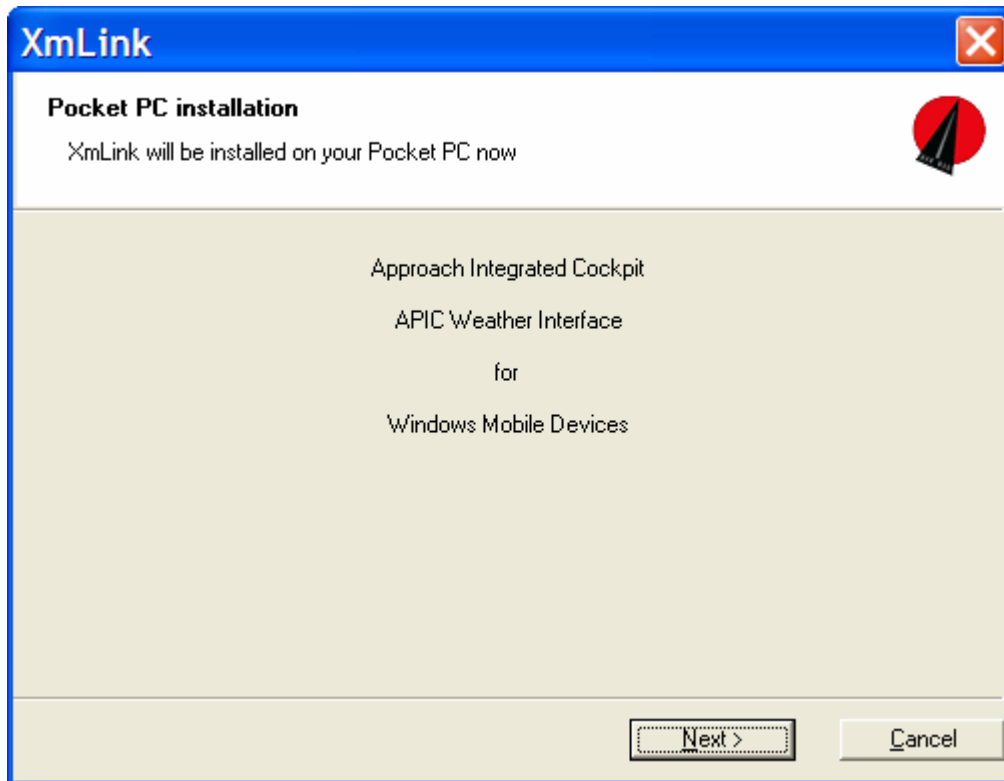
- b. When the following Dialog pops up click the “Run” button.



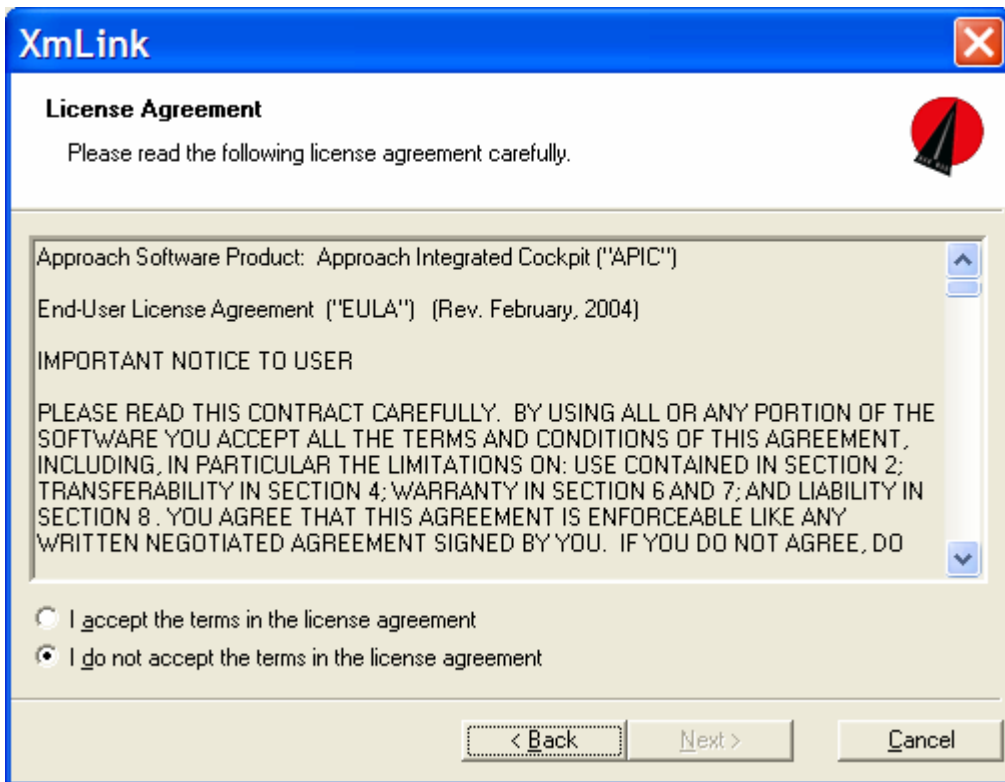
- c. If the following warning dialog pops up click the “Run” button.



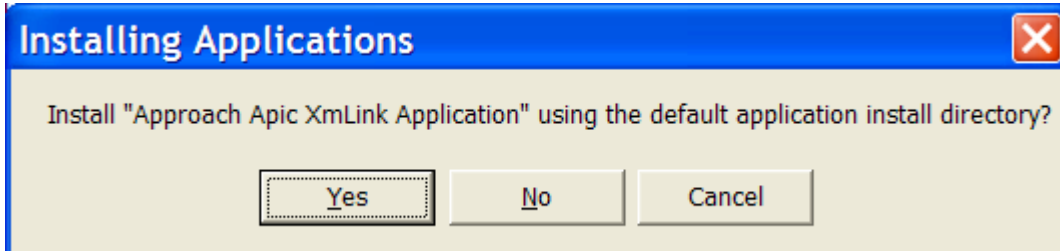
- d. When the XmLink install application starts up click the “Next” button.



- e. Read the License agreement, click on the “I accept the terms in the license agreement” radio button and then click the “Next” button.



- f. Click "Yes" to install XmlLink to the default location. XmlLink must be installed in the same location that APIC is installed.



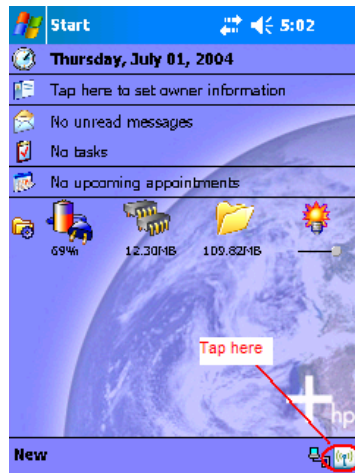
## **2) Connect WxWorx Satellite Radio hardware**

- a. Connect the antenna to the WxWorx box and place the antenna in a location where it has clear access to the sky. For best reception the antenna should have clear access to the southern sky.
- b. Connect the serial cable to the WxWorx box and to your PDA (Serial only)
- c. Connect the WxWorx box to power.

If you are installing a Serial WxWorx Satellite Radio please go to [step 3](#). If you are installing a Bluetooth WxWorx Satellite Radio please continue with steps 3 – 6.

3) **Pair the WxWorx Satellite Radio with your PDA (Bluetooth only)**

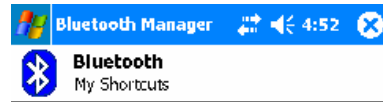
- a. Turn on the PDA Bluetooth radio.



- b. Launch BT Manager.



c. Tap the “New” menu item



Tap New to access other devices via Bluetooth



d. Tap “Explore a Bluetooth device”.



d. Tap the “WxWorx” device.



e. Tap "XM Data" service.



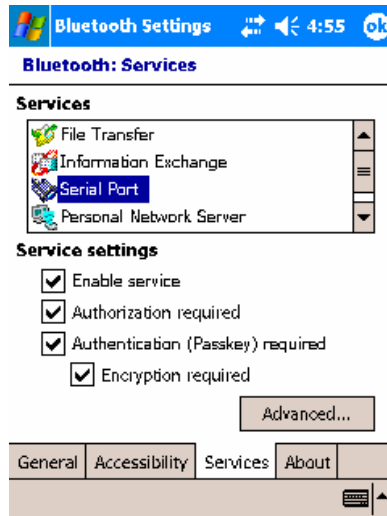
f. Tap Finish



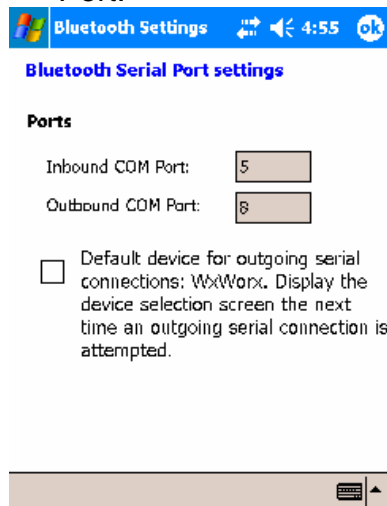
- e. Find the WxWorx satellite radio COM port.
  - i. Launch Bluetooth Settings.



- ii. Tap the “Services” tab and select the “Serial Port” service.

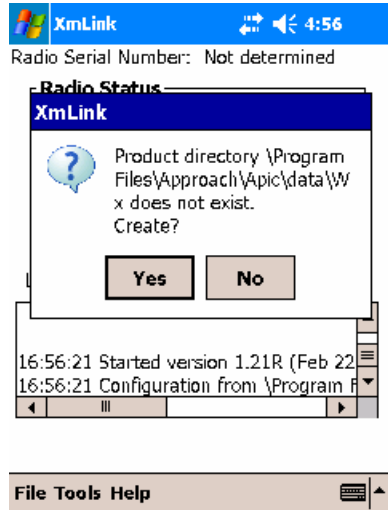


- iii. Tap the “Advanced” button and note the Outbound COM Port:

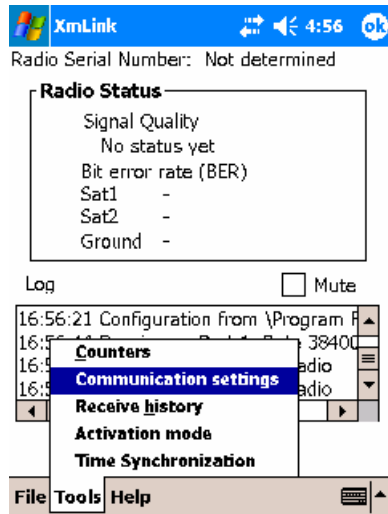


4) **Set the WxWorx Satellite Radio COM port.**

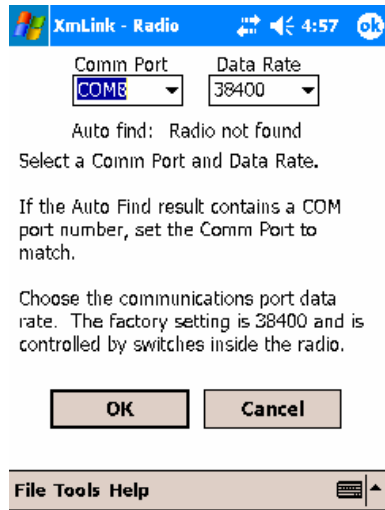
- f. Launch the Weather Link application Xmlink. Using the device file explorer, navigate to \Program Files\Approach\Apic and tap on the Xmlink application. The first time that Xmlink launches it will ask if you want to create a data directory. Tap the Yes button and then follow these directions.



- g. Tap Tools->Communication Settings menu item.



- h. Set the COM port. If you are installing a Serial WxWorx Satellite Radio then make sure that the COM port is set to COM1. If you are installing a Bluetooth WxWorx Satellite Radio then select the COM port from [step 3.e.iii](#) above. The baud rate should be set to 38400. Then tap the Okay button.



- i. If the Bluetooth Console pops up then:
  - i. Tap “Always use the selected device”
  - ii. Tap WxWorx device.

5) **Activate your XM subscription.**

- a. When the activation screen is displayed, note the Radio Serial number and then contact XM Satellite Radio's Listener Care Center at 1-800-985-9200 and request activation of the XM WX Satellite radio for the "Aviator" package.

**Radio Serial #**  
4NBK600W

Main Channel

**Product Enable Groups**

0  1  2  3  
 4  5  6  7  8

Service Level: None defined

Settings:  
Settings: SID=240 App=10

Exit Done Help

File Tools Help

- b. You will need to have the following personal information available:

Name  
Address  
Phone Number  
Credit Card Information

- c. You will need to have the following information about your WxWorx satellite radio which can be found on the label on the bottom of your WxWorx satellite radio.

Model Number  
XM Radio ID

Note: The WxWorx Satellite Radio must remain powered and the antenna positioned to receive a satellite signal. Direct line of site with the satellite is required, which usually cannot be accomplished in a hangar. Activation/authorization of the system could take from 1 hour to 24 hours. (This time is dependent on the number of activations/authorizations occurring on the same day.) When complete, the 'Service Level' will reflect 'Aviator'. If 24 hours passes and your Radio still hasn't been activated, then contact XM Satellite Radio's Listener Care Center again or visit [www.xmradio.com/refresh](http://www.xmradio.com/refresh) to enter your Radio Serial Number to receive the activation signal for an additional 24 hours. Leave the radio powered until the 'Service Level' located on the XM Radio Activation Mode is "Aviator".

Congratulations, your WxWorx Bluetooth satellite radio is now set up and ready to use with Approach Integrated Cockpit! Tap the Ok button on top right corner of the screen to close the Weather link application. From now on Apic will take care of starting and shutting down the Weather link application.